



# 03

**Fresas e porta lâminas perfilados**  
Fresas y cabezales perfilados

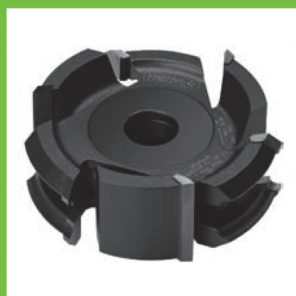


araújo&silva  
ferramentas de corte

# JÁ MEDIU A SUA PRODUTIVIDADE?



A Araujo&Silva, Lda. desenvolve ferramentas especiais, proporcionando aos seus clientes as soluções mais rentáveis.



araújo&silva  
ferramentas de corte

ESPECIALISTAS EM FERRAMENTA DE CORTE

[www.araujosilva.pt](http://www.araujosilva.pt)



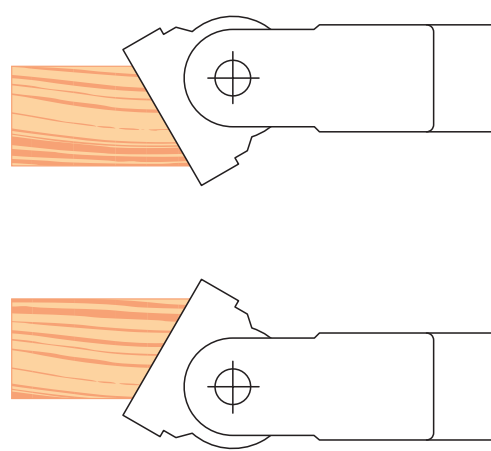
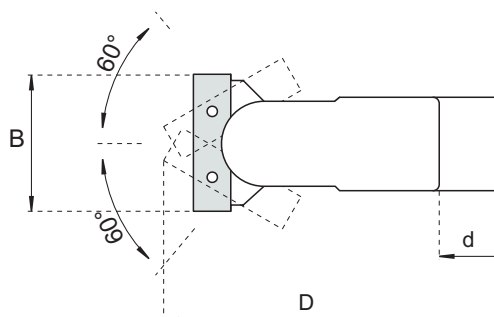
HW · MAN

D	Dmax	B	d	Z	n min · n max	Ref.
140	163	50	30	2	5100 - 8000	2225.201
170	193	50	30/50	2	4800 - 6000	2225.202
	218	80	30/50	3	4800-6000	2225.203



ACESSÓRIOS - Piezas de recambio

	dim.	B	Ref.
Lâmina	50x12x1,5		5001.07.1
	80x13x2,2		5001.13.1
Calço		50	5421.50
		80	5421.80
Perno	M8x10		5105.014
Chave em T	SW4		5302.103
	SW5		5302.104



03

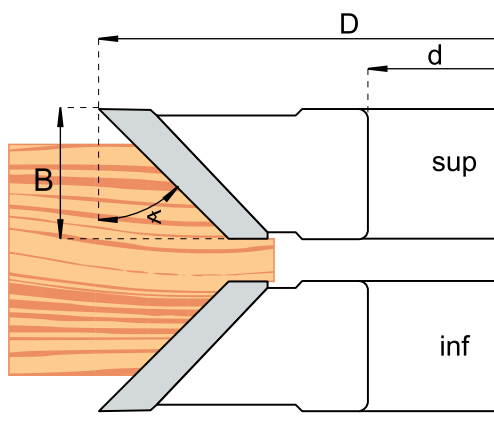
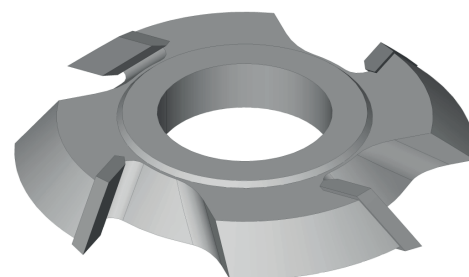
Fresas e porta-lâminas perfilados · Fresas y cabezales perfilados

Fresa de chanfros  
Fresa para biselar

1125

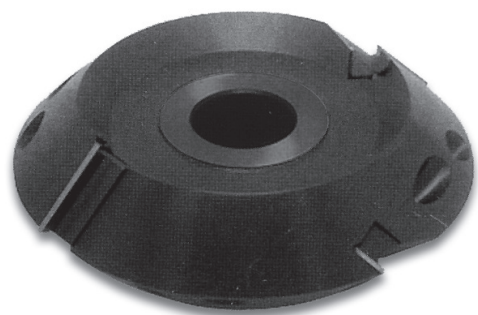
HW · MAN

D	B	d	Z	(°)	n min · n max	HW Ref. Inf.	HW Ref. Sup.
140	15	50	4	45°	5500 - 9000	1125.201	1125.202
160	30	50	4	45°	5200 - 8500	1125.301	1125.302





## 2226 Porta – lâminas de chanfro duplo Cabezal para biselar

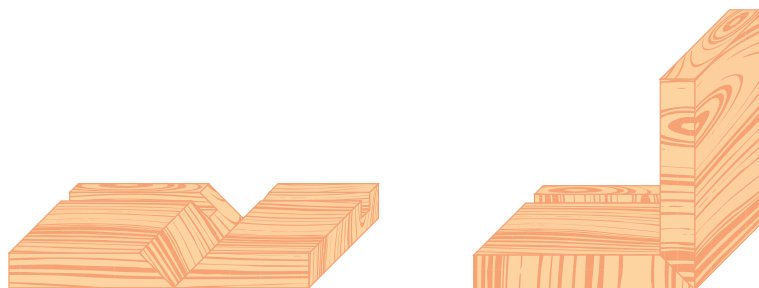
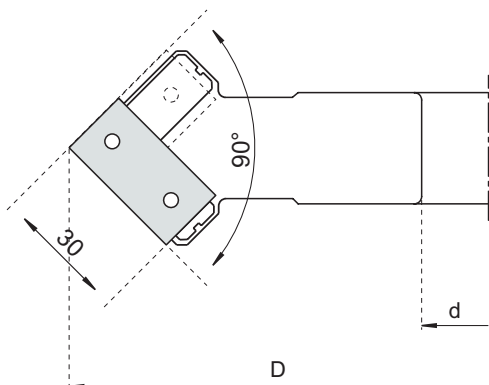


HW · MAN

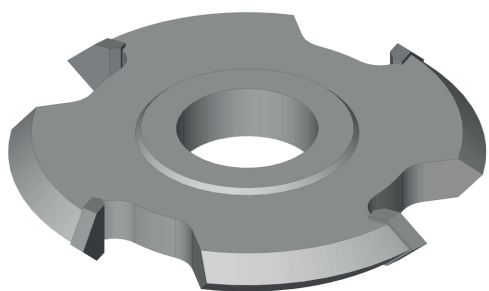
D	d	Z	n min · n max	Ref.
140	30/50	2+2	5500 - 9000	2226.201
200	30/50	3+3	5500 - 9000	2226.501

### ACESSÓRIOS - Piezas de recambio

	dim.	Ref.
Lâmina	29,5x12x1,5	5004.01.1
Calço	LH	5403.028
	RH	5404.028
Perno (DIN915)	M8x2	5105.006
Chave em T	SW4	5302.103

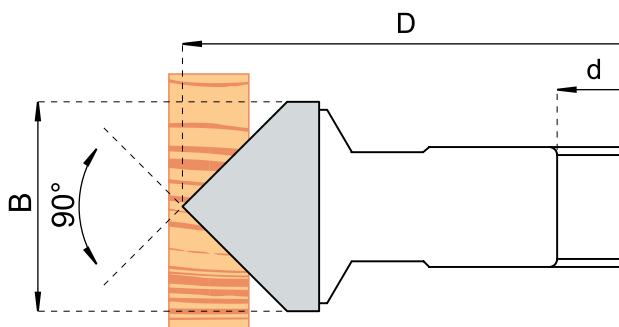


## 1126 Fresa de chanfro duplo Fresa para biselar



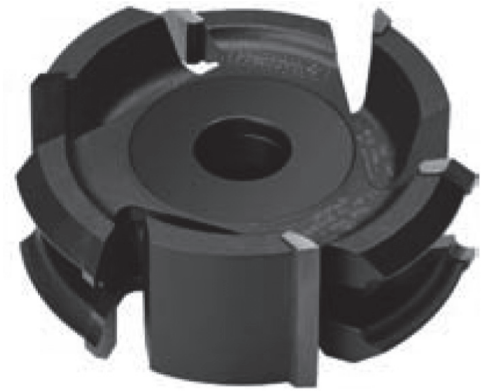
HW · MAN

D	B	d	Z	n min · n max	Ref.
140	16	30/50	4	5400 - 9500	1126.201



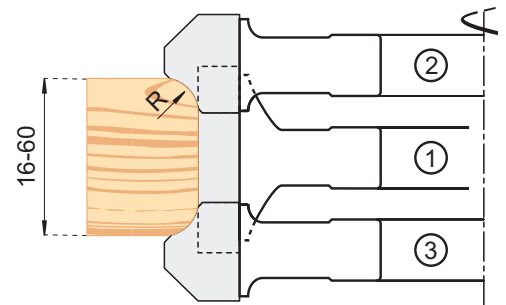


Nr.	D	B	d	Z	HW · MEC		HW Ref.
					R	n max	
1	140	60	40/50	3		8500	7000.201
2	153	18	40/50	3	5	8500	7000.251
2	156	24	40/50	3	7	8500	7000.252
3	153	18	40/50	3	5	8500	7000.253
3	156	24	40/50	3	7	8500	7000.254
1+2+3					5	8500	7000.901
1+2+3					7	8500	7000.902



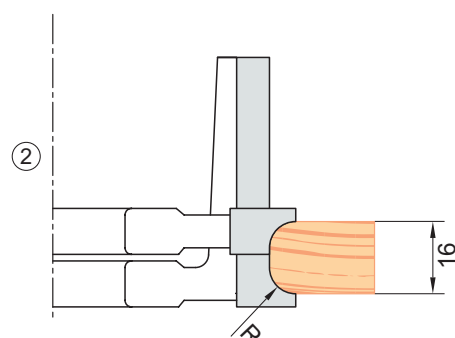
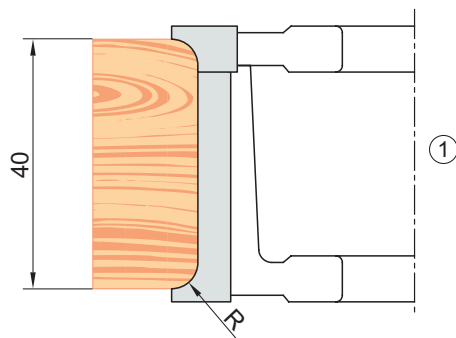
**ACESSÓRIOS - Piezas de recambio**

B	Ref.
22	



**Jogo extensível para facejar e bolear**  
 Juego de fresas para cantear y biselar

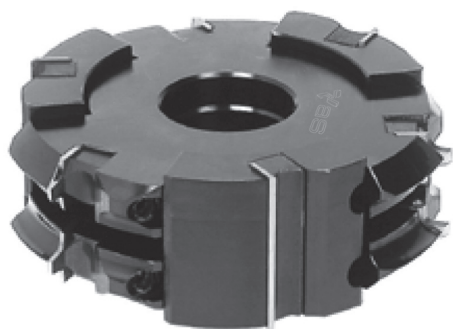
Nr.	D	d	d	R	n max	HW Ref.
1	140	50	4	3	9000	7001.201
1		50	4	5	9000	7001.202
1		50	4	8	9000	7001.203
2		50	4	3	9000	7001.204
2		50	4	5	9000	7001.205
2		50	4	8	9000	7001.206





## 2227 Porta-lâminas para facejar, chanfrar e bolear

### Cabezal para cantear, biselar y redondear



HW · MEC

Nr.	D	B	d	Z	Ref.
1	100	30	30	2	2227.001
1		50		2	2227.002
1	125	30	40/50	3	2227.125
1		50		3	2227.126

Nr.	D	B	d	Z	R	Ref.
2	113	16	30	2	2,3,4,5,6/45°	2227.003
2	137	16	40/50	3	2,3,4,5,6/45°	2227.151
2	146	25	40/50	3	8,10,/45°	2227.201

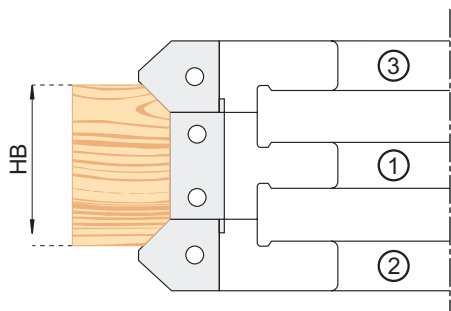
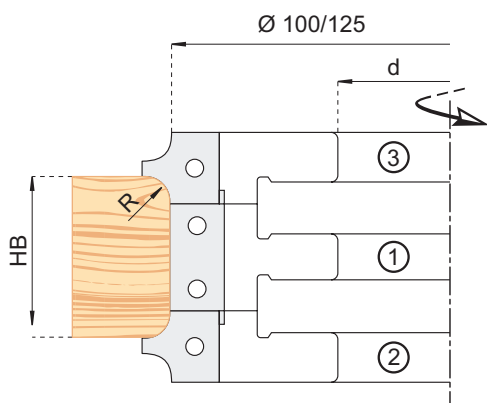
SEM LÂMINAS - sin cuchilla

Nr.	D	B	d	Z	R	Ref.
3	113	16	30	2	2,3,4,5,6/45°	2227.004
3	137	16	40/50	3	2,3,4,5,6/45°	2227.152
3	146	25	40/50	3	8,10,/45°	2227.202

SEM LÂMINAS - sin cuchilla

#### ACESSÓRIOS - Piezas de recambio

	dim.	Ref.	
Lâmina	30x12x1,5	5001.01.1	
	50x12x1,5	5001.07.1	
	16x17,5x2	R2	5025.01
	16x17,5x2	R3	5025.02
	16x17,5x2	R4	5025.03
	16x17,5x2	R5	5025.04
	16x17,5x2	R6	5025.05
	25x25x2	R8	LM2227.01
	25x25x2	R10	LM2227.02
	16x17,5x2	7X45°	LM2227.04
25x25x2	10X45°	LM2227.05	
Calço	B30	C2227.01	
	B50	C2227.02	
	R2-6/45°	C2227.03	
	R8-10/45°	C2227.04	
Perno (DIN915)	M6x10	R2-6/45°	5105.003
	M8x12	R8-10/45°	5105.006
Chave em T	SW3(M6)		5302.102
	SW4(M8)		5302.103



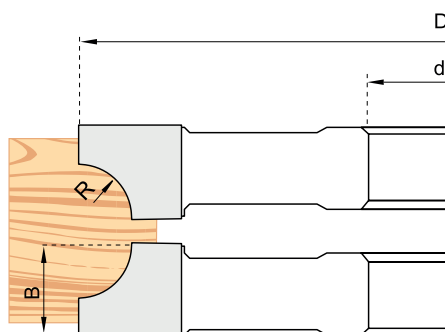
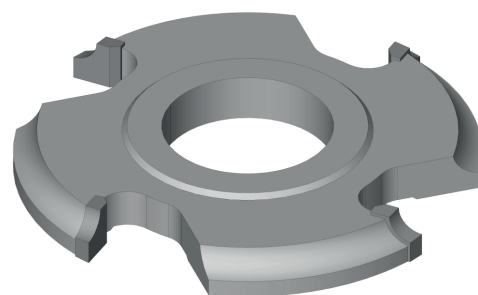
	Nr.1 (B 30)		Nr.1 (B 50)	
	HB min	max 2X*	HB min	max 2X*
R2-6/45°	12-39	703.009	16-60	703.015
R2-6/45°	20-47	703.010	20-67	703.012

\*Jogo fornecido sem anilhas - Juego proporcionado sin arandelas



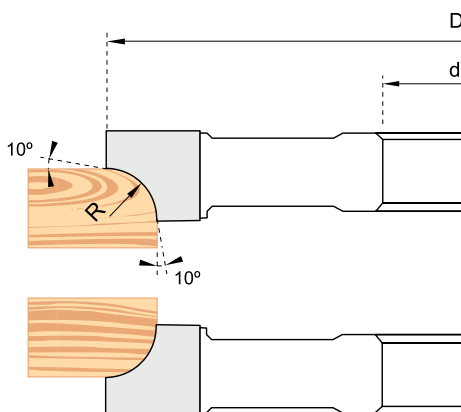
HW · MAN

D	B	d	Z	R	n min · n max	HW Ref. Inf.	HW Ref. Sup.
140	12	50	4	5	5500 - 9000	1150.201	1150.202
	14	50	4	7	5500 - 9000	1150.203	1150.204
	15	50	4	8	5500 - 9000	1150.205	1150.206
	17	50	4	10	5500 - 9000	1150.207	1150.208
	19	50	4	12	5500 - 9000	1150.209	1150.210
	22	50	4	15	5500 - 9000	1150.211	1150.212
	27	50	4	20	5500 - 9000	1150.213	1150.214
150	33	50	4	25	5200 - 8500	1150.251	1150.252
160	40	50	4	30	4800 - 8000	1150.301	1150.302
180	50	50	4	40	4300 - 7000	1150.401	1150.402



PRODUÇÃO A PEDIDO - Sobre pedido

D	B	d	Z	R	n min · n max	HW Ref. Inf.	HW Ref. Sup.
140	12	50	4	5	5500 - 9000	1150.901	1150.902
	14	50	4	7	5500 - 9000	1150.903	1150.904
	15	50	4	8	5500 - 9000	1150.905	1150.906
	17	50	4	10	5500 - 9000	1150.907	1150.908
	19	50	4	12	5500 - 9000	1150.909	1150.910
	22	50	4	15	5500 - 9000	1150.911	1150.912
	27	50	4	20	5500 - 9000	1150.913	1150.914
150	33	50	4	25	5200 - 8500	1150.915	1150.916
160	40	50	4	30	4800 - 8000	1150.917	1150.918
180	50	50	4	40	4300 - 7000	1150.919	1150.920

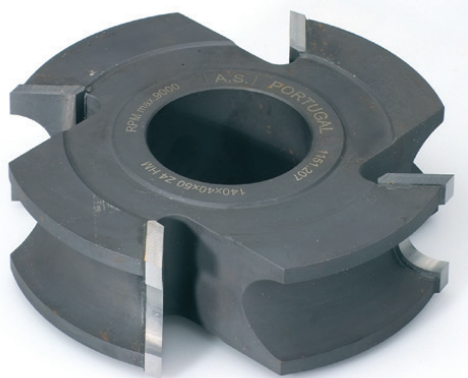






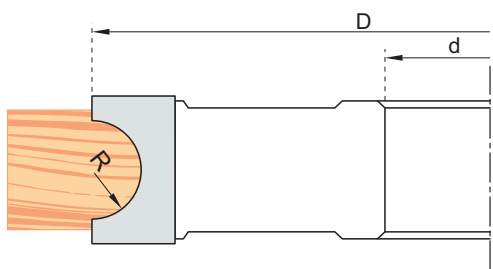
## 1151 Fresa de raio 1/2 círculo côncavo

Fresa para radios 1/2 convexa



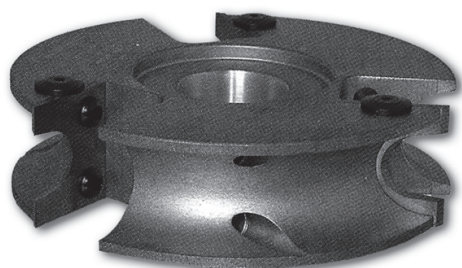
HW · MAN

D	B	d	Z	R	n min · n max	HW Ref.
140	16	50	4	2,75	5500 - 9000	1151.201
	23	50	4	4	5500 - 9000	1151.202
	25	50	4	5	5500 - 9000	1151.203
	26	50	4	6	5500 - 9000	1151.204
	28	50	4	7,5	5500 - 9000	1151.205
	30	50	4	10	5500 - 9000	1151.206
	40	50	4	12,5	5500 - 9000	1151.207
	45	50	4	15	5500 - 9000	1151.208
	50	50	4	17,5	5500 - 9000	1151.209
	55	50	4	20	5500 - 9000	1151.210
150	65	50	4	25	5200 - 8800	1151.251



## 2250 Porta-lâminas de raio 1/2 círculo côncavo

Cabezal para radios 1/2 côncavo

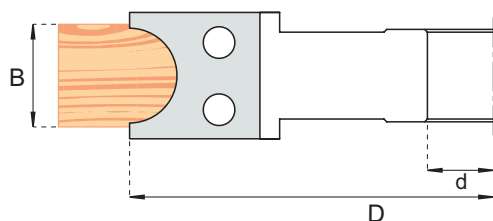


HM · MAN

D	B	d	Z	R	n max	Ref.
140	30	50	3	10	9000	2250.201
	35	50	3	12,5	9000	2250.202
	40	50	3	15	9000	2250.203

### ACESSÓRIOS - Piezas de recambio

	dim.	R	Ref.
Lâmina	30x35x3	10	LM2250.201
	35x35x3	12,5	LM2250.202
	40x35x3	15	LM2250.203
Parafuso	M6x15		P2250
Parafuso especial cabeça cilíndrica	M5x7x16 T15		5113.004 5302.205
Chave Torx tipo B	T20		5302.206





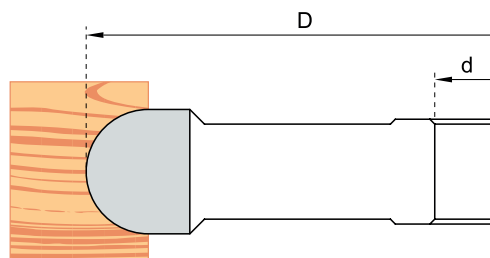
**Fresa de raio 1/2 círculo convexo**  
Fresa para radios 1/2 convexa

**1152**



HW · MAN

D	B	d	Z	R	n min · n max	HW Ref.
140	5	50	4	2,5	5500 - 9000	1152.201
	6	50	4	3	5500 - 9000	1152.202
	8	50	4	4	5500 - 9000	1152.203
	10	50	4	5	5500 - 9000	1152.204
	12	50	4	6	5500 - 9000	1152.205
	15	50	4	7,5	5500 - 9000	1152.206
	20	50	4	10	5500 - 9000	1152.207
	25	50	4	12,5	5500 - 9000	1152.208
	30	50	4	15	5500 - 9000	1152.209
	32	50	4	16	5500 - 9000	1152.210
	35	50	4	17,5	5500 - 9000	1152.211
	37	50	4	18,5	5500 - 9000	1152.212
	40	50	4	20	5500 - 9000	1152.213

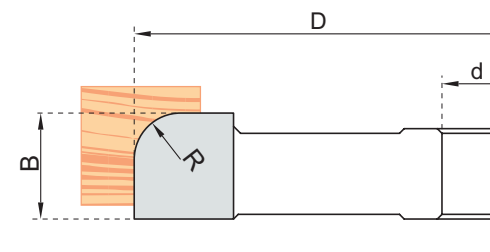
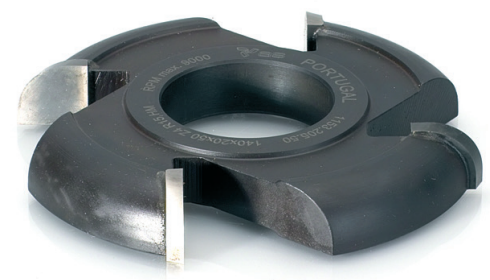


**Fresa de raio 1/4 de círculo convexo**  
Fresa para radios 1/4 convexa

**1153**

HW · MAN

D	B	d	Z	R	n min · n max	HW Ref.
140	10	50	4	5	5500 - 9000	1153.201
	12	50	4	7	5500 - 9000	1153.202
	15	50	4	10	5500 - 9000	1153.203
	17	50	4	12	5500 - 9000	1153.204
	20	50	4	15	5500 - 9000	1153.205
	25	50	4	20	5500 - 9000	1153.206





## 2251 Porta-lâminas de raio 1/4 círculo côncavo-convexo Cabezal para raios 1/4 côncavo-convexa

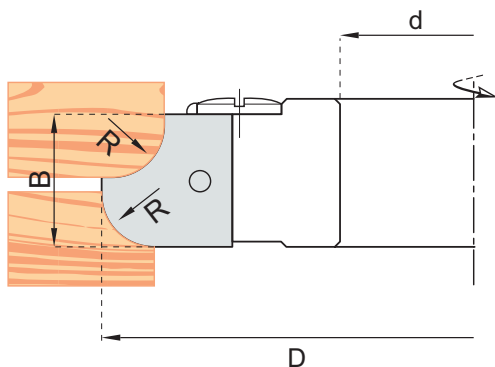


HW · MAN

D	B	d	Z	R	n max	Ref.
140	20	30/50	3	5;6;7	9000	2251.201
	25	30/50	3	10;12	9000	2251.202

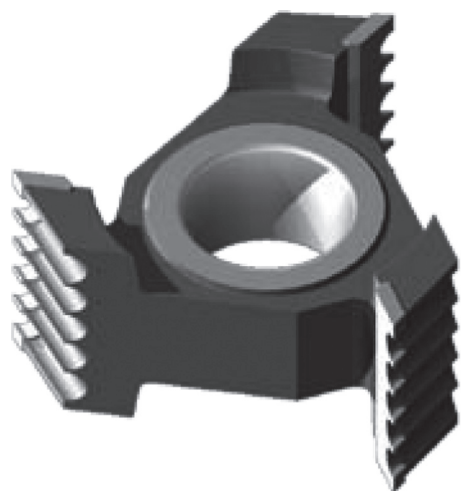
### ACESSÓRIOS - Piezas de recambio

	dim.	R	Ref.
Lâmina	20x25x2	5	LM2251.01
	20x25x2	6	LM2251.02
	20x25x2	7,5	LM2251.03
	25x25x2	10	LM2251.04
	25x25x2	12	LM2251.05
Calço		5/6/7,5	C2251.01
		10/12	C2251.02
Perno (DIN915)	M8x16	5/6/7,5	5105.007
	M10x20	10/12	5105.011
Chave em T	SW4 (M8)		5302.103
	SW5 (M10)		5302.104

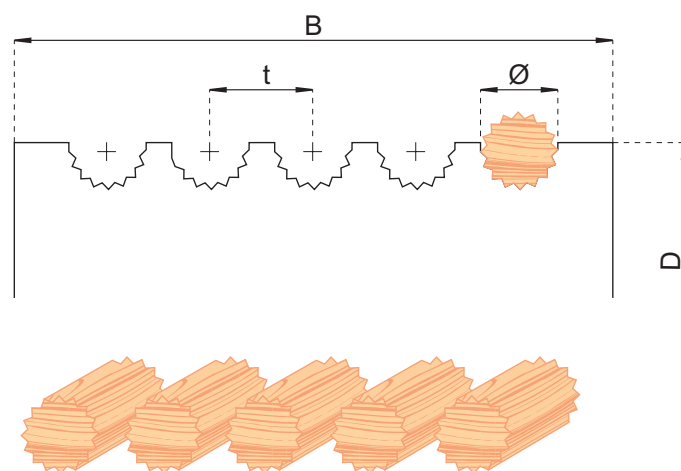
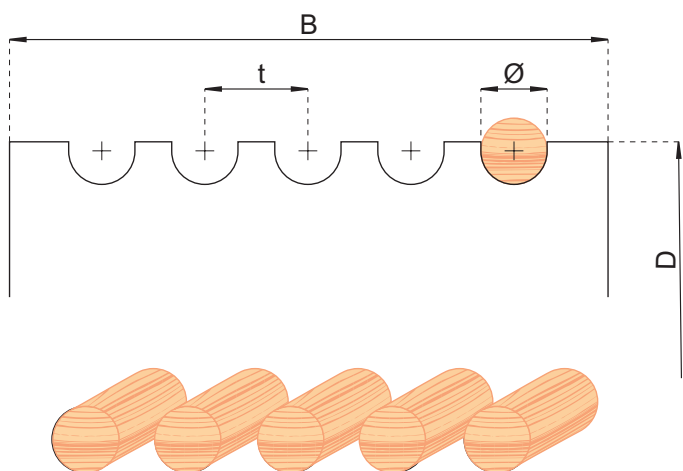
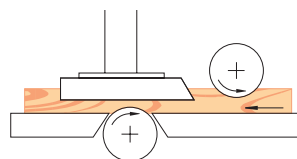


## 1305 Fresas para cavilhas lisas e estriadas Fresa para palos redondos e estriados

PRODUÇÃO A PEDIDO  
Producción por solicitud



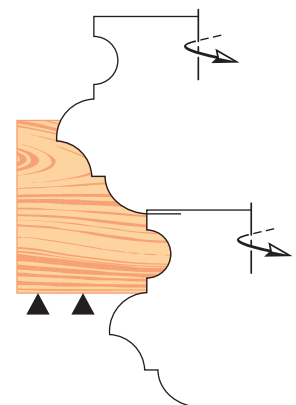
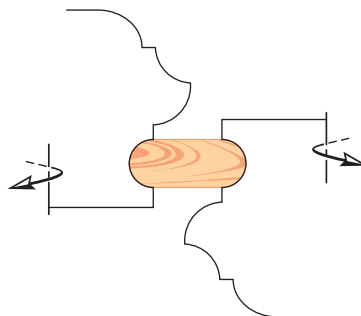
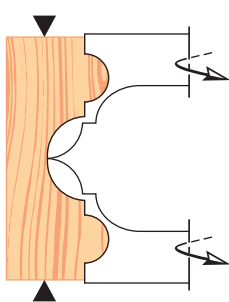
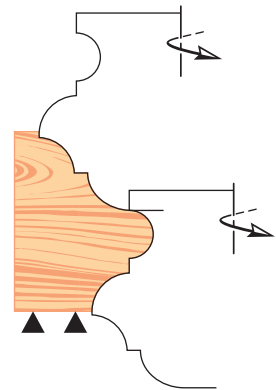
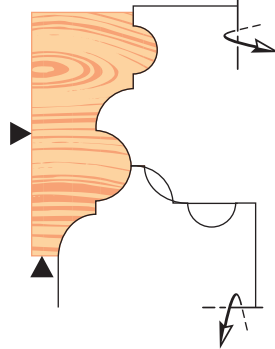
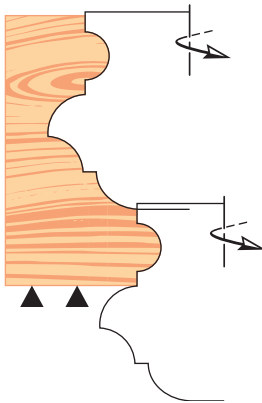
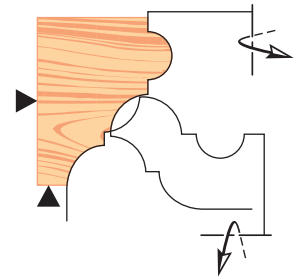
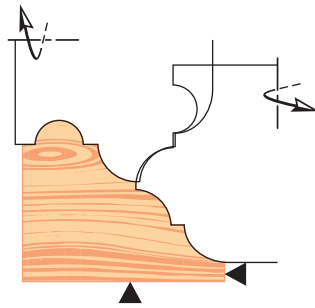
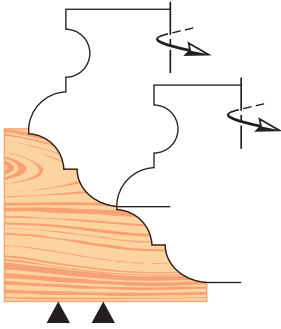
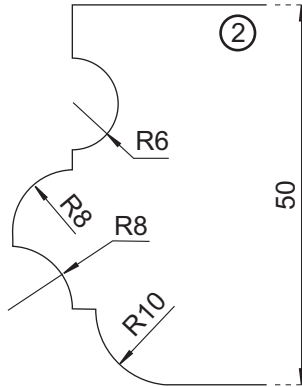
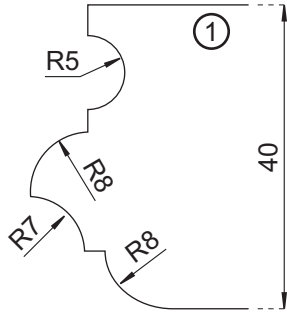
- PARA GARANTIR CAVILHAS PERFEITAS, RECOMENDAMOS O USO DO PATIM GUIA.
- Para asegurar palos redondos perfectos, recomendamos la utilizacion de placa de guia





HW · MAN

Nr.	D	B	d	Z	n max	HW Ref.
1	120	40	50	2	10000	1175.101
1	140	40	50	3	9000	1175.201
2	140	50	50	3	9000	1175.202



03

Fresas e porta-lâminas perfilados · Fresas y cabezales perfilados



## 2276 Porta-lâminas de multiperfil Cabezal multiperfil



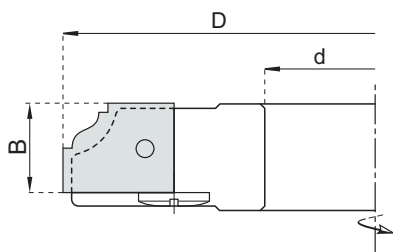
HW · MEC

D	B	d	Z	n max	HW Ref.
140	20	50	3	9500	2276.201

PORTA-LÂMINAS FORNECIDO SEM LÂMINAS  
Cabezal suministrado sin cuchilla

### ACESSÓRIOS - Piezas de recambio

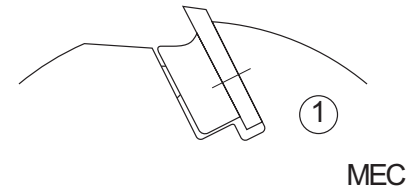
	dim.	Ref.
Lâmina	P1 20x25x2	
	P2 20x25x2	
	P3 20x25x2	
	P4 20x25x2	
	P5 20x25x2	
	P6 20x25x2	
	P7 20x25x2	
	P8 20x25x2	
	P9 20x25x2	
	P10 20x25x2	
	P11 20x25x2	
	P12 20x25x2	
	P13 20x25x2	
	P14 20x25x2	
	P15 20x25x2	
	P16 20x25x2	
Calço		
Perno (DIN915)	M8x16	5105.007
Chave em T	SW4	5302.103





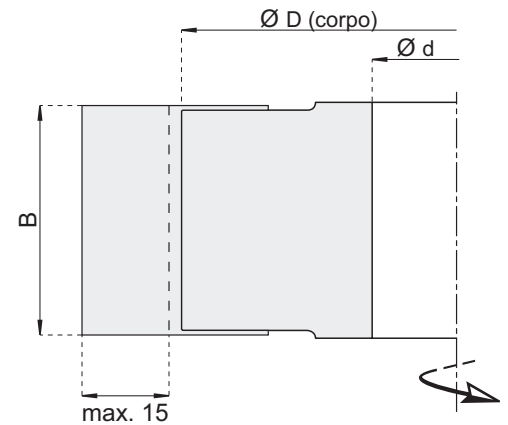
Nr.1 · MEC

D	B	d	Z	LÂMINA-Cuchillas	n max	Ref.
COM 2 LÂMINAS RECTAS - Con 2 cuchillas rectas						
100	40	30	2		9000	<b>2325.001</b>
120	40	50	2		9000	<b>2325.101</b>
Jogo completo com caixa de madeira - Juego completo con estuche						
100	40	30	2	1-6	9000	<b>2325.901</b>
	40	30	2	1-12	9000	<b>2325.902</b>
	40	30	2	9/12/14/15/19/36	9000	<b>2325.903</b>
120	40	50	2	1-6	9000	<b>2325.904</b>
	40	50	2	1-12	9000	<b>2325.905</b>
	40	30	2	9/12/14/15/19/36	9000	<b>2325.906</b>



ACESSÓRIOS - Piezas de recambio

	Nr.	Dim.	Ref.
Calço	1		
	2		
Perno (DIN915)	1	M10x20	5105.011
	2	M10x16	5105.010
Chave em T		SW5	5302.104



LÂMINAS COM PERFIS ESPECIAIS A PEDIDO



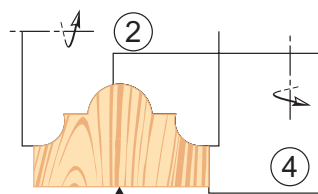
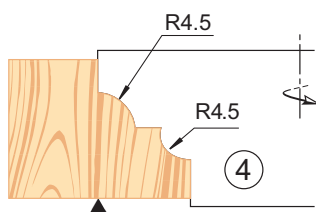
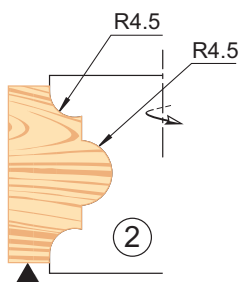
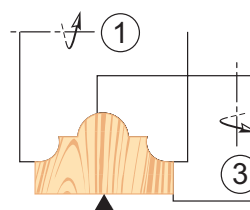
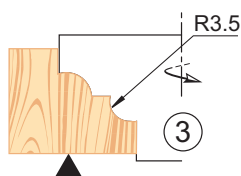
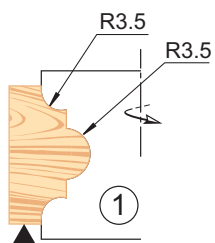
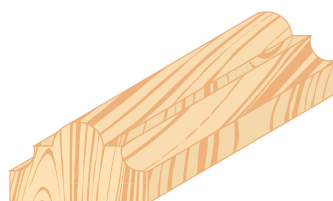
# 1200 Fresa de perfil

## Fresa de perfil



HW · MAN

Nr.	D	B	d	Z	n max	HW Ref.
1	140	24	50	3	9000	1200.201
2	140	28	50	3	9000	1200.202
3	140	18	50	3	9000	1200.203
4	140	22	50	3	9000	1200.204



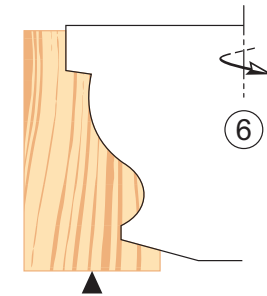
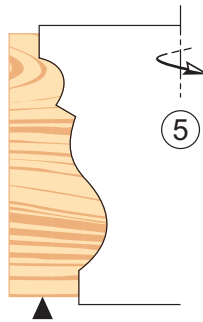
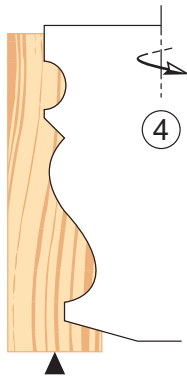
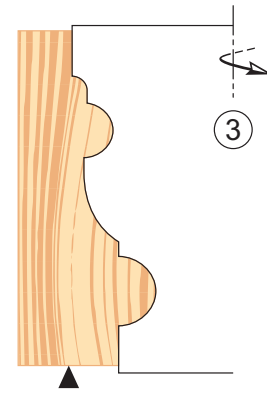
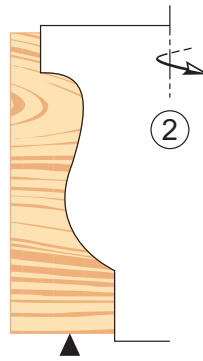
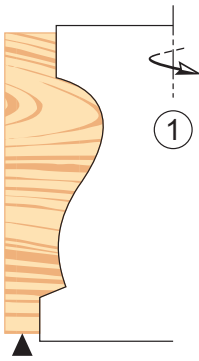
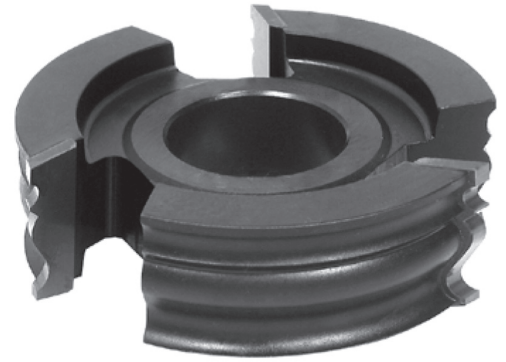
03

Fresas e porta-lâminas perfilados · Fresas y cabezales perfilados



HW · MAN

Nr.	D	B	d	Z	n max	HW Ref.
1	140	45	50	3	9000	1202.201
2	140	45	50	3	9000	1202.202
3	140	50	50	3	9000	1202.203
4	140	45	50	3	9000	1202.204
5	140	40	50	3	9000	1202.205
6	140	34	50	3	9000	1202.206







# 1205 Fresa de perfil

## Fresa de perfil

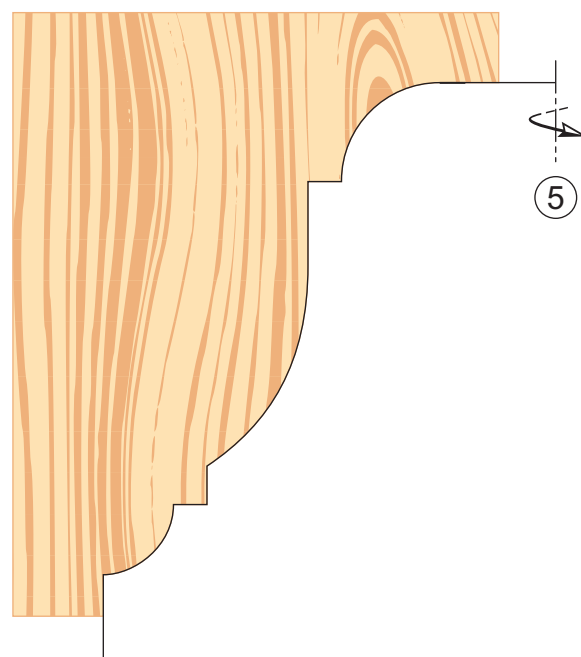
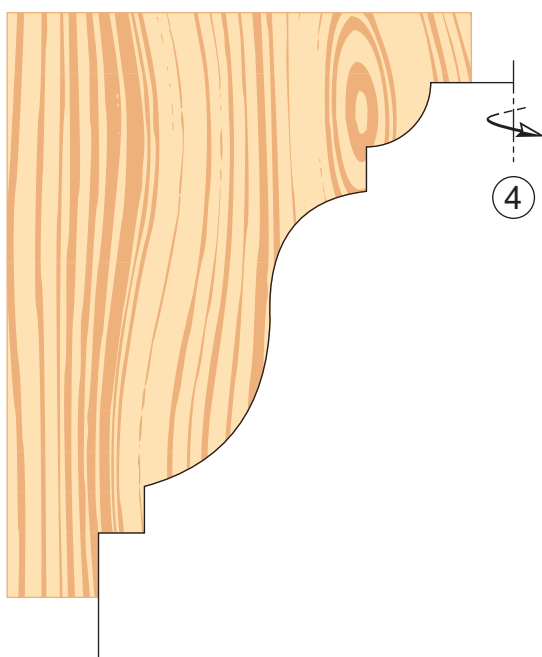
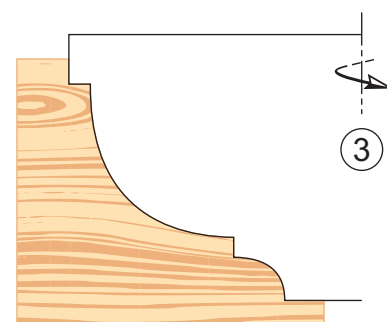
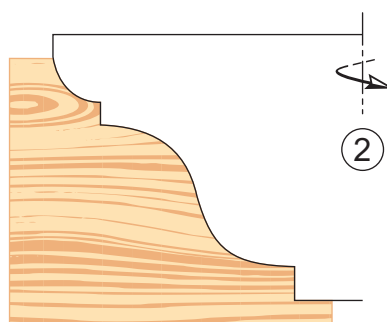
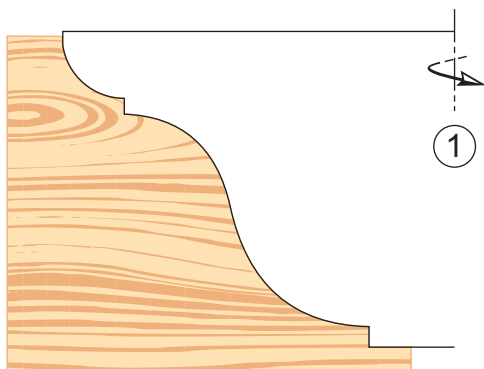


HW · MAN

Nr.	D	B	d	Z	n max	HW Ref.
1	170	38	50	3	7500	1205.351
2	150	32	50	3	8500	1205.251
3	160	32	50	3	8000	1205.301
4	180	70	50	3	7000	1205.401
5	180	70	50	3	7000	1205.402

03

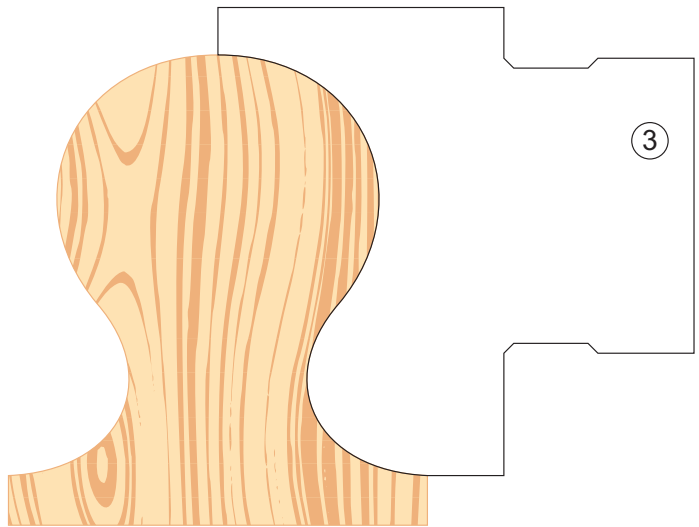
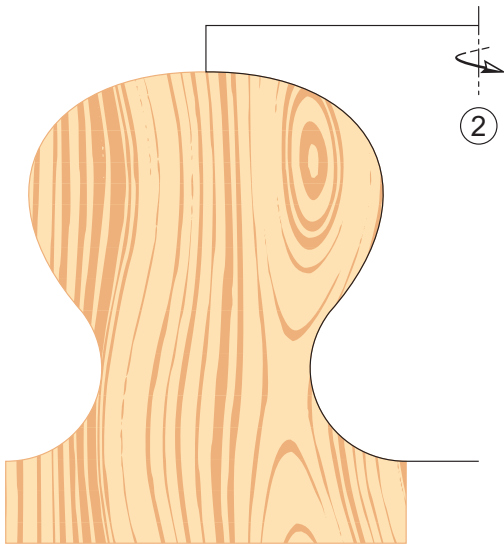
Fresas e porta-lâminas perfilados · Fresas y cabezales perfilados





HW · MAN

Nr.	D	B	d	Z	n max	HW Ref.
2	150	70	50	3	5200 - 8900	1225.252
3		55	50	3	5200 - 8900	1225.253



03

Fresas e porta-lâminas perfilados · Fresas y cabezales perfilados





araújo&silva  
ferramentas de corte

[www.araujosilva.pt](http://www.araujosilva.pt)